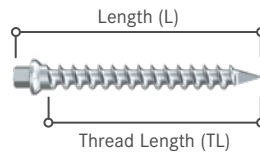




# Komet Medical. Pins for orthopedics.

---





STE =  
REF Code for  
sterile packaging



magnetizable  
steel



Single Use

## Guide Pins



Universal Fluted Pin		Ø (mm)	L (mm)	TL (mm)	Hub	Wrench width (mm)
<a href="#">GP001A.076.031 STE</a>   GP001A.076.031		3.2	76.0	56.0	Square	2.25



Universal Fluted Pin		Ø (mm)	L (mm)	TL (mm)	Hub	Wrench width (mm)
<a href="#">GP001.089.032 STE</a>   GP001.089.032		3.2	89.0	70.0	Square	2.25



Universal Fluted Pin		Ø (mm)	L (mm)	TL (mm)	Hub	Wrench width (mm)
<a href="#">GP001A.089.032 STE</a>   GP001A.089.032		3.2	89.0	70.0	Square	2.25



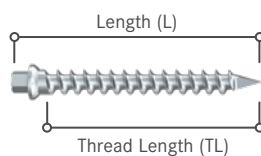
Smooth Pin		Ø (mm)	L (mm)	TL (mm)	Hub	Wrench width (mm)
<a href="#">GP002A.089.032 STE</a>   GP002A.089.032		3.2	89.0	-	Square	2.25



Headed Pin		Ø (mm)	L (mm)	TL (mm)	Hub	Wrench width (mm)
<a href="#">GP003A.019.030 STE</a>   GP003A.019.030		3.0	19.0	-	-	-
<a href="#">GP003A.027.030 STE</a>   GP003A.027.030		3.0	27.0	-	-	-
<a href="#">GP003A.035.030 STE</a>   GP003A.035.030		3.0	35.0	-	-	-
<a href="#">GP003A.038.030 STE</a>   GP003A.038.030		3.0	38.0	-	-	-



Smooth Pin		Ø (mm)	L (mm)	TL (mm)	Hub	Wrench width (mm)
<a href="#">GP003B.076.032 STE</a>   GP003B.076.032		3.2	76.0	-	Round	-
<a href="#">GP003B.127.032 STE</a>   GP003B.127.032		3.2	127.0	-	Round	-



STE =  
REF Code for  
sterile packaging



magnetizable  
steel



Single Use

## Guide Pins



Drill Pin		Ø (mm)	L (mm)	TL (mm)	Hub	Wrench width (mm)
GP005.076.032 STE   GP005.076.032		3.2	76.0	55.5	Triangle	2.78



Fluted Pin		Ø (mm)	L (mm)	TL (mm)	Hub	Wrench width (mm)
GP007.075.032 STE   GP007.075.032		3.2	75.0	30.0	Hexagon	2.5



Komet standard sterile packaging



Wrench width



Square



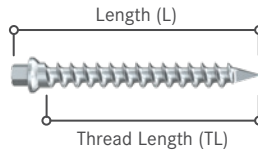
Round



Hexagon



Triangle



STERILE

STE =  
REF Code for  
sterile packaging



NON  
STERILE



magnetizable  
steel



Single Use

## Guide Screws



Headed Threaded		Ø (mm)	L (mm)	TL (mm)	Hub	Wrench width (mm)
GS901.033.032 STE   GS901.033.032		3.2	33.0	30.0	Hexagon	2.5



Headed Threaded		Ø (mm)	L (mm)	TL (mm)	Hub	Wrench width (mm)
GS901.050.032 STE   GS901.050.032		3.2	50.0	46.0	Hexagon	2.5



Headless Threaded		Ø (mm)	L (mm)	TL (mm)	Hub	Wrench width (mm)
GS901A.050.032 STE   GS901A.050.032		3.2	50.0	46.0	Hexagon	2.5



Headed Threaded		Ø (mm)	L (mm)	TL (mm)	Hub	Wrench width (mm)
GS905.030.032 STE   GS905.030.032		3.2	30.0	26.0	Hexagon	3.5



Headed Threaded		Ø (mm)	L (mm)	TL (mm)	Hub	Wrench width (mm)
GS905.050.032 STE   GS905.050.032		3.2	50.0	46.0	Hexagon	3.5



Headed Threaded		Ø (mm)	L (mm)	TL (mm)	Hub	Wrench width (mm)
GS903.062.032 STE   GS903.062.032		3.2	62.5	46.0	Square	2.25



Headless Threaded		Ø (mm)	L (mm)	TL (mm)	Hub	Wrench width (mm)
GS903A.062.032 STE   GS903A.062.032		3.2	62.5	46.0	Square	2.25



Square



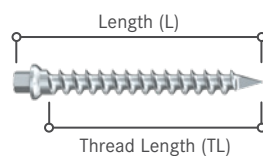
Round



Hexagon



Triangle



STE =  
REF Code for  
sterile packaging



magnetizable  
steel



Single Use

## Guide Screws



Headed Threaded		Ø (mm)	L (mm)	TL (mm)	Hub	Wrench width (mm)
<a href="#">GS907.067.032 STE</a>   <a href="#">GS907.067.032</a>		3.2	67.0	39.0	Triangle	2.78



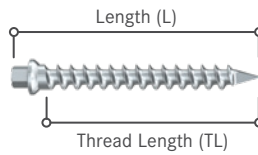
Headless Threaded		Ø (mm)	L (mm)	TL (mm)	Hub	Wrench width (mm)
<a href="#">GS907A.076.032 STE</a>   <a href="#">GS907A.076.032</a>		3.2	76.0	55.5	Triangle	2.78



Headed Threaded		Ø (mm)	L (mm)	TL (mm)	Hub	Wrench width (mm)
<a href="#">GS908.056.032 STE</a>   <a href="#">GS908.056.032</a>		3.2	56.0	45.0	Z Shank	-



Headed Threaded		Ø (mm)	L (mm)	TL (mm)	Hub	Wrench width (mm)
<a href="#">GS909.027.032 STE</a>   <a href="#">GS909.027.032</a>		3.2	27.0	24.0	Inner Hexagon	-



STE =  
REF Code for  
sterile packaging



magnetizable  
steel



Single Use

## Navigation Pins



Long Pin	Ø (mm)	L (mm)	TL (mm)	Hub	Wrench width (mm)
GS902.150.032 STE   GS902.150.032	3.2	150.0	51.0	Round ●	-



Long Pin	Ø (mm)	L (mm)	TL (mm)	Hub	Wrench width (mm)
GS904.100.030 STE   GS904.100.030	3.0	100.0	26.0	Square ■	2.25
GS904.150.030 STE   GS904.150.030	3.0	150.0	26.0	Square ■	2.25



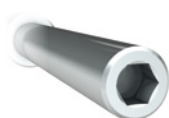
Long Pin	Ø (mm)	L (mm)	TL (mm)	Hub	Wrench width (mm)
GS904.100.040 STE   GS904.100.040	4.0	100.0	25.0	Square ■	2.25



Long Pin	Ø (mm)	L (mm)	TL (mm)	Hub	Wrench width (mm)
GS910.110.032 STE   GS910.110.032	3.2	110.0	50.0	Round ●	-
GS910.140.032 STE   GS910.140.032	3.2	140.0	50.0	Round ●	-



Long Pin	Ø (mm)	L (mm)	TL (mm)	Hub	Wrench width (mm)
GS910.080.040 STE   GS910.080.040	4.0	80.0	50.0	Square ■	3.0
GS910.110.040 STE   GS910.110.040	4.0	110.0	50.0	Square ■	3.0
GS910.140.040 STE   GS910.140.040	4.0	140.0	50.0	Square ■	3.0
GS910.170.040 STE   GS910.170.040	4.0	170.0	50.0	Square ■	3.0



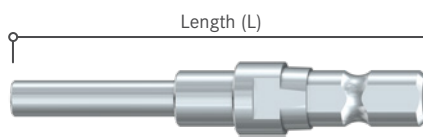
Hexagon



Square



Triangle



magnetic

## Driver | Pin Adapter



Pin Adapter		L (mm)	Wrench shape	Wrench width (mm)	Hub
GS900.055.010		55.0	Square ■	2.25	Zimmer/Hudson
GS900.055.020		55.0	Triangle ▼	2.78	Zimmer/Hudson



Pin Adapter		L (mm)	Wrench shape	Wrench width (mm)	Hub
GS900.100.000		100.0	Hexagon ◆	2.5	Zimmer/Hudson
GS900.100.010		100.0	Square ■	2.25	Zimmer/Hudson



Pin Adapter		L (mm)	Wrench shape	Wrench width (mm)	Hub
GS900.130.000		130.0	Hexagon ◆	2.5	Zimmer/Hudson



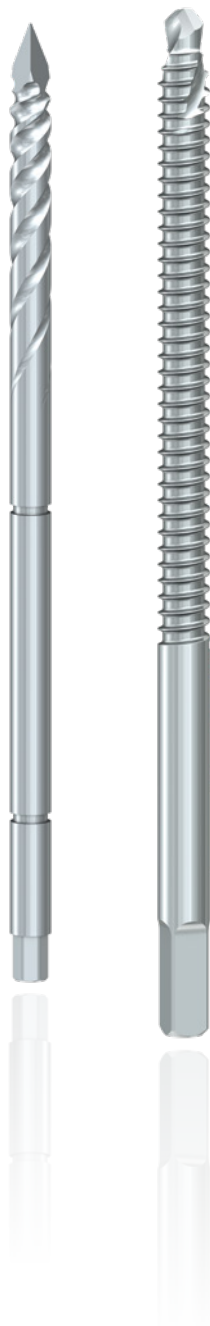
Pin Adapter		L (mm)	Wrench shape	Wrench width (mm)	Hub
GS900A.040.000		40.0	Square ■	2.25	AO



## Customized Solutions

Your Requirements – Our Solutions:

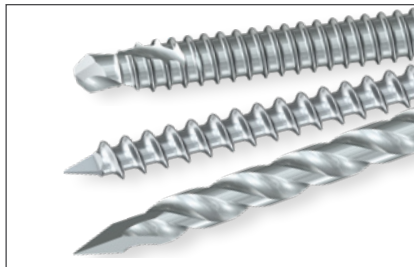
# Individually designed Pins, Screws & Drivers



### Type of Steel

We offer a wide range of stainless steel

- implantable steel
- magnetizable steel



### Type of Thread

- Non-fluted smooth pins
- Fluted pins
- Threaded pins
- Trocar tip, self cutting tip or blunt tip
- According to your individual diameters with tight tolerances



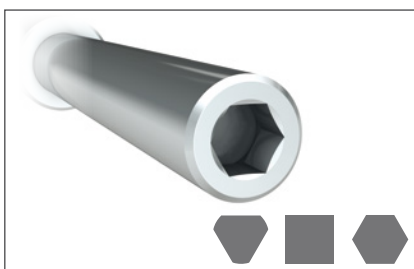
### Type of Hub

- Round
- Triangle
- Square
- Hexagon and inner hexagon
- ▶ Individually sized or standard market sizes



### Type of Packaging/Labeling

- Bulk/safe transport packaging
- Sterile packaging, ready-to-sell
- Non-sterile packaging, ready-to-sell
- Private Label option with your brand/logo and Komet Medical as CE/510(k) provider (STE + Non-STE)
- Kit packaging (STE + Non-STE)



### Type of Driver

- Individually designed drivers according to your specifications



Komet Medical  
Trophagener Weg 25 · 32657 Lemgo · Germany  
Telefon +49 (0) 5261 701-400  
info@kometmedical.de  
www.kometmedical.de

---

